



**ALASKA DIVISION OF HOMELAND  
SECURITY & EMERGENCY MANAGEMENT**  
**SITUATION REPORT**  
**25-22• January 22, 2025**



Toll-Free 1.800.478.2337

Anchorage Area 907.428.7000

SEOC 907.428.7100

<b><u>SEOC Preparedness Level</u></b> Level 1-Routine Operations	<a href="http://ready.alaska.gov">http://ready.alaska.gov</a>	<b><u>National Terrorism Advisory System:</u></b>  <a href="#">Read the NTAS Bulletin here</a>
<b><u>Maritime Security (MARSEC)</u></b> Level:1- Minimum Appropriate Security Measures	<b>WHO Novel Coronavirus Pandemic (COVID-19):</b> <a href="#">2019 Novel Coronavirus</a>	<b><u>Alaska Military Installation Force Protection</u></b>  <b><u>Level:</u></b> FPCON Bravo

(Significant changes from previous situation reports are red.)

**Significant Issues:**

**North Slope Fiber Communication Disruption:**

SEOC was advised of a severed Quintillion undersea fiber line disrupting internet communications. As of this morning, there were no life-safety issues reported. AT&T Wireless and Starlink are filling communication gaps.

**Department of Health (DOH):**

For current information, see: <https://health.alaska.gov/dph/Pages/default.aspx>  
<https://health.alaska.gov/dph/Emergency/Pages/prepared/default.aspx>

**NTAS Bulletin:**

The U.S. Department of Homeland Security issued an updated National Terrorism Advisory Bulletin on May 24, 2023. The current and expired bulletins can be viewed at the below link.

<https://www.dhs.gov/national-terrorism-advisory-system>

**Travel Alerts and Conditions:**

For current driving conditions, dial 511 or visit: <https://511.alaska.gov/>

**Barry Arm Landslide / Tsunami Risk:**

For the latest information on the Barry Arm Landslide and Tsunami risk, click here:

<https://dggs.alaska.gov/hazards/barry-arm-landslide.html>

**Earthquakes:**

United States Geological Service (USGS) Earthquake Information: <http://earthquake.usgs.gov/>  
National Tsunami Warning Center: <http://tsunami.gov/>

### Alaska Volcanoes:

**Great Sitkin** Alert Level: **Watch** and Aviation Color Code: **Orange**

**Mt. Spurr** Alert Level: **Advisory** and Aviation Color Code: **Yellow**

For Alaska Volcano updates, go to: <https://www.avo.alaska.edu/>

### Air Quality Index (AQI) Advisories:

For the most up-to-date Air Quality Index Advisories:

<http://dec.alaska.gov/Applications/Air/airtoolsweb/Home/Index>

### Spills of Oil and Hazardous Substances:

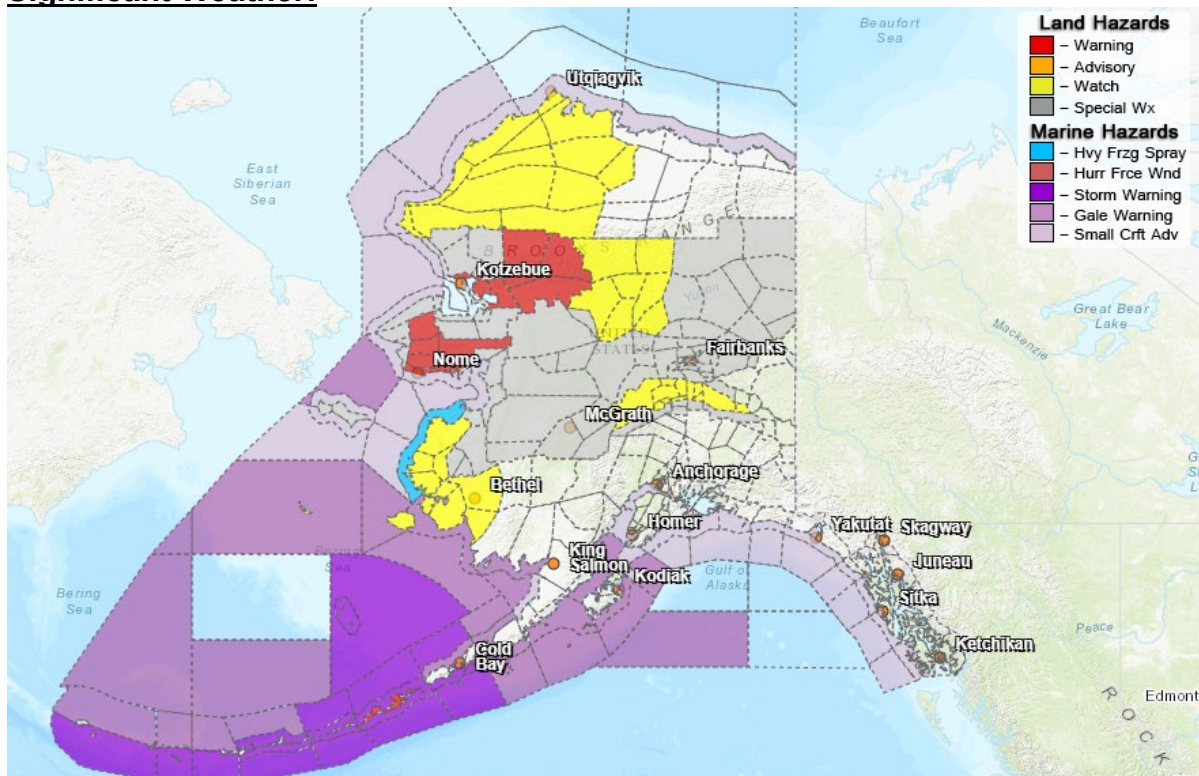
The Alaska Division of Environmental Conservation (ADEC) Spill Prevention and Response page is located at: <https://dec.alaska.gov/spar/>

### Alaska Cyber Security Information:

State Employees may sign up for cybersecurity notifications and alerts at:

<https://oit.alaska.gov/security>

### Significant Weather:



### Special Weather Statement:

- **South Slopes of The Eastern Brooks Range; Yukon Flats; White Mountains and High Terrain South of the Yukon River; Delta Junction; Upper Chena River Valley; Tanana Flats; Eielson AFB and Salcha; Goldstream Valley and Nenana Hills; Chatanika River Valley; Two Rivers; Fairbanks Metro Area; Nenana; Eastern Alaska Range North of Trims Camp; Eastern Alaska Range South of Trims Camp-Active weather beginning Thursday night. Moisture and very warm air from a storm in the Bering Sea will begin to push into the eastern Interior on Thursday night. This will begin a very active period of weather over the following week for the area.**
- **South Slopes of the Western Brooks Range, Noatak Valley, Kivalina and Red Dog Dock, Lower Kobuk Valley, Baldwin Peninsula, Northern Seward Peninsula, Upper Kobuk Valleys, Shishmaref, Bering Strait Coast, Southern Seward Peninsula Coast, Interior Seward Peninsula, Eastern Norton Sound and Nulato Hills, Yukon Delta**

**Coast, Lower Yukon River, St Lawrence Island, Lower Koyukuk Valley, Middle Yukon Valley, Lower Yukon and Innoko Valleys, North Slopes of the Western Alaska Range, Upper Kuskokwim Valley**-storms continuing across western Alaska.

- **Central Interior, Northern Denali Borough, Southern Denali Borough**- heavy snowfall and rain likely for Central Interior.

**High Wind Warning:**

- **Eastern Aleutians**-In effect from 4am to 10pm Thursday.

**High Wind Watch:**

- **Northern Denali Borough, Eastern Alaska Range North of Trims Camp**-late Thursday night through Saturday evening.
- **Dalton Highway Summits, Upper Koyukuk Valley, South Slopes of the Central Brooks Range**-late Thursday night through late Friday night.

**Winter Storm Warning:**

- **Southern Seward Peninsula Coast, Interior Seward Peninsula, South Slopes of the Western Brooks Range, Upper Kobuk Valleys, Lower Kobuk Valley**-in effect until 6pm this evening.

**Winter Storm Watch:**

- **Western Arctic Coast, Northwest Arctic Coast, Northern Arctic Coast, Western Arctic Plains, Howard Pass and the Delong Mountains**-in effect from Friday through Saturday afternoon.
- **Yukon Delta Coast**-in effect from Thursday afternoon through Friday morning. \*Winter Storm Warning CANCELLED\*

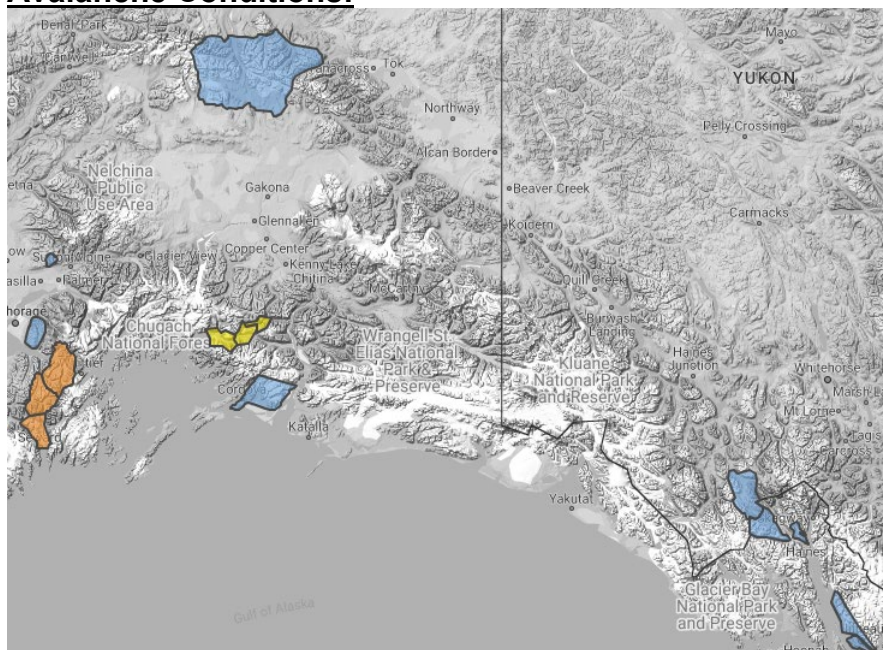
**Coastal Flood Watch:**

- **Kuskokwim Delta**- in effect from this evening through Friday morning.

For more information and the most current Weather, Watches/Warning/Advisories go to:

<https://www.weather.gov/arh/>

**Avalanche Conditions:**



**Summit Lake** – Moderate below 2,500', Considerable above 2,500'.

**Turnagain Pass** – Moderate 1,000', Considerable between 1,000'.

**Seward and Lost Lake**- Moderate 1,000', Considerable between 1,000'-2,500', High above 2,500'.

**Valdez Maritime, Intermountain, and Continental**–Low below 1,500', Considerable above 1,500'.

For more information and the most current avalanche conditions, go to: <https://alaskasnow.org/>

**The Next Situation Report** will be on **January 23, 2025**. An interim report will be prompted by a significant change in the situation or the threat level. This report is posted on the internet at <https://ready.alaska.gov/sitrep>.

**To register for email distribution, PLEASE go to:**  
<http://list.state.ak.us/mailman/listinfo/dhsem.situation.report>.

Direct questions regarding this report to the SEOC at 907-428-7100 or [seoc@alaska.gov](mailto:seoc@alaska.gov).